

BuySWD.com LLC

Address: 6009 W. Parker Road, Texas, United States
http://www.buyswd.com



Agent

Kurt Knewitz
Phone : 833-BUY-SWDS
Mobile : 214-418-1177
Email :
kurt@buyswd.com



#150 - THREE (3) SWD PERMITS (PERMIAN)

Price : \$750,000	Bath : 0
Bed : 0	~Lot Area : 0
Year Built : 0	Property ID : 165063

Commercial SWD Permit for Sale Howard County, Texas

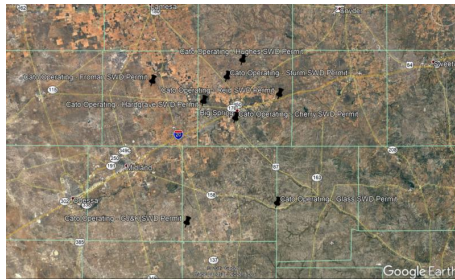
Cherry SWD #1 Rockhouse Rd, 1.26 miles west of Hwy 87 and Big Spring Disposal Interval:
1,786' – 3,000' Formations: Yates / Seven Rivers / Queen Max BBL/Day: 25,000 Max PSIG:
893

Commercial SWD Permit for Sale Howard County, Texas

Reid SWD #1 Hwy 87I; 2.84 miles E of Coahoma Disposal Interval: 3,200' – 4,195' Formation:
Clearfork Max BBL/Day: 25,000 Max PSIG: 1,600

Commercial SWD Permit for Sale Glasscock County, Texas

**GJ&K SWD #1 FM 1357; 19.3 miles SW of Garden City Disposal Interval: 12,500' – 13,000'
Formation: Ellenberger Max BBL/Day: 25,000 Max PSIG: 6,250**

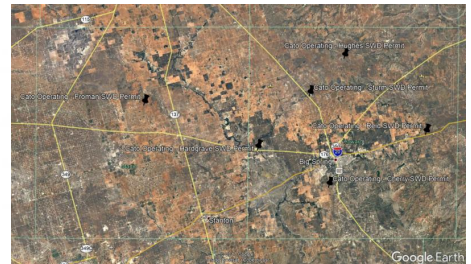


**Commercial SWD Permit for Sale
Martin County, Texas**
Froman SWD #1
Corner of FM 827 & CR 3960,
approximately 4 miles north of
Hwy 176
Injection Interval: 12,310' –
14,000'
Formations: Ellenberger
Max BBL/Day: 25,000
Max PSIG: 6,000

**Commercial SWD Permit for Sale
Howard County, Texas**
Cherry SWD #1
Backhouse Rd, 1.26 miles west
of Hwy 87 and Big Spring
Disposal Interval: 1,780' – 3,000'
Formations: Yates / Seven Rivers
/ Queen
Max BBL/Day: 25,000
Max PSIG: 893

**Commercial SWD Permit for Sale
Howard County, Texas**
Hughes SWD #2
FM 846; 14.5 miles N of Big
Spring
Disposal Interval: 3,350' –
5,472'
Formations: San Andres /
Clearfork / Wichita
Max BBL/Day: 25,000
Max PSIG: 1,675

**Commercial SWD Permit for Sale
Glasscock County, Texas**
GJ&K SWD #1
FM 1357; 19.3 miles SW of
Garden City
Disposal Interval: 12,500' –
13,000'
Formation: Ellenberger
Max BBL/Day: 25,000
Max PSIG: 6,250



**Commercial SWD Permit for Sale
Howard County, Texas**
Sturm SWD #1
Hwy 87, 9.75 miles NNW of Big
Spring
Disposal Interval: 3,150' – 6,250'
Formations: San Andres /
Clearfork
Max BBL/Day: 25,000
Max PSIG: 1,575

**Commercial SWD Permit for Sale
Howard County, Texas**
Glass SWD #1
Hwy 138 – at one of only two
O&G entrances to the Glass
Ranch
Disposal Interval: 1,250' – 2,150'
Formations: Yates / Seven Rivers
/ Queen
Max BBL/Day: 25,000
Max PSIG: 625

**Commercial SWD Permit for Sale
Howard County, Texas**
Hardgrave SWD #1
Hwy 176; 11.4 miles W of Big
Spring
Disposal Interval: 4,150' –
4,550'
Formation: Glorieta
Max BBL/Day: 25,000
Max PSIG: 2,075

**Commercial SWD Permit for Sale
Howard County, Texas**
Reid SWD #1
Hwy 87; 2.84 miles E of
Cochran
Disposal Interval: 3,200' – 4,190'
Formation: Clearfork
Max BBL/Day: 25,000
Max PSIG: 1,600

